

NEWSLETTER

[Our Story](#) | [Welcome](#) | [Thank you](#)

New Nursing Staff

We are delighted to announce that nurses Lynette and Olivia have joined our team.

They have integrated really well and have been warmly welcomed by staff and patients alike.

Free Hearing Check

Box Hill Superclinic is offering free hearing check for our patients.

An audiology clinic has been set up within our clinic to run every month at present.

For further information, please speak with your GP or enquire at the reception desk.

Season's Greetings

Box Hill Superclinic would like to take this opportunity to wish all Merry Christmas and a Happy New Year!!

With the New Year coming, Box Hill Superclinic continues to expand its services - please watch this space for further updates.



Setting up the Clinic

Many patients and visitors have been interested to know our story. The roles are reversed this time around and we thought to share this with you.

Box Hill Superclinic was set up by GPs with a clear mission of providing holistic continued care for our community. We set out first by establishing a level of primary care access that had not existed in the area, which is opening till late, every day of the year.

Everything that we have done is with our patients in mind. From providing free car parking, to bulk billed services (including our Obstetric &





Community Hero

Dr Kasumi Tochigi is a GP at Box Hill Superclinic with special interest in eye conditions.

She was working as an Ophthalmologist in Japan for many years and made the move to Melbourne to become a GP.

We are very fortunate to have her in our community as she is able to provide her expertise in eye conditions for our patients.

Seeing an Ophthalmologist can be a daunting prospect when there are symptoms because any eye condition usually causes a visual disturbance and it either requires a visit to the emergency department or a long wait to see an Ophthalmologist in a specialist clinic.

Getting access to her expertise is now simply a visit to the clinic, and we cannot thank her enough for her contribution.

If you have any eye concerns or would like to have a preventative health review of your eyes, please let our reception know to book a bulk billed visit to see Dr Kasumi .

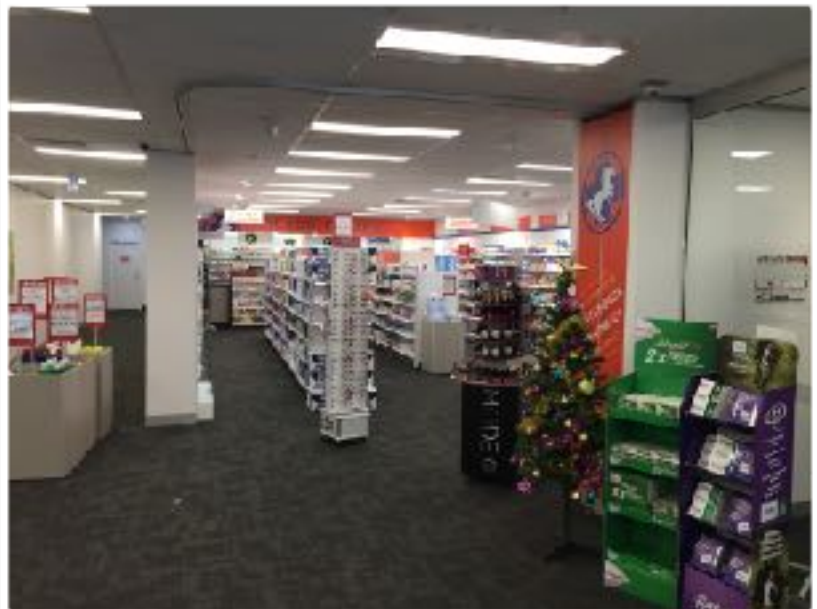
If you would have any comments or would like to contribute to our newsletter, please speak to a member of staff to enquire how to do so

Gynaecology Specialist service and Cardiac Investigation services), to having an on site late night pharmacy. We understand that when you are unwell, our aim is to make it as pleasant an experience for you.

Our view of good health is not the absence of illness, but rather the promotion of sustainable general well-being. Therefore, the role of primary care is not just about managing an illness, it is also important to prevent the onset of an illness and knowing what to do to continue to have the healthy life we envision for ourselves.

At Box Hill Superclinic this is high on our priority and that is why we strive to keep our services bulk billed and accessible to all.

We want to be the vanguard to good health so that our community can continue to evolve and grow. We are therefore always looking for ways to innovate, to provide the next generation of healthcare.



Late night Whitehorse Pharmacy

We are open throughout the festive season. Please check with our team regarding our opening times during the holidays.